



ELECTRICITY DISTRIBUTION SERVICES

Customised Price-quality Path

Annual Compliance Statement

Assessment period: 01 April 2020 – 31 March 2021

Published: 31 August 2021

1	Summary.....	3
2	Assessment against the price path.....	4
3	Assessment against the quality path.....	9
4	Reopener transactions.....	15
5	Director's certificate.....	16
6	Auditor's report.....	17
7	Appendices.....	19

Powerco is required to annually report on compliance with its price-quality path

Powerco Limited's electricity distribution business ("Powerco") is subject to regulation under the Commerce Act 1986. The Commerce Commission ("Commission") has set a customised price-quality path (CPP) which applies to Powerco from 1 April 2018 to 31 March 2023. This 2021 assessment is the third assessment period under the CPP.

The CPP requirements are set out in the Powerco Limited Electricity Distribution Customised Price-Quality Path Determination 2018¹ ("Determination"). The Determination requires Powerco to provide an annual compliance statement ("Statement") to the Commission. In November 2020², the disclosure date for the 2021, 2022, and 2023 assessments was amended to be within five months following the end of the disclosure year. This aligns with the requirements for other information disclosures, allowing a more efficient audit and production process. It differs from the original Determination which specifies a 50-day timeframe.

This Statement confirms that Powerco:

- **complies with the requirement to calculate the wash-up amount for the assessment period (section 3);**
- **complies with the quality standards for the assessment period (section 4); and**
- **has not entered into any agreement with another EDB or Transpower for an amalgamation, merger, major transaction or non-reopener transaction in the assessment period (section 5).**

Powerco is available to assist the Commission with its review of this Statement and will provide any additional information as requested.

Powerco published this Statement on 31 August 2021. A copy is available at Powerco's principal office (Powerco, Level 2, 84 Liardet Street, New Plymouth). The Statement is published on Powerco's website (www.Powerco.co.nz) and additional copies can be provided on request.

¹ https://comcom.govt.nz/_data/assets/pdf_file/0026/216863/Powerco-Limited-electricity-distribution-customised-price-quality-path-determination-2018-consolidated-20-May-2020-20-May-2020.pdf

² https://comcom.govt.nz/_data/assets/pdf_file/0024/227616/2020-NZCC-23-Powerco-Limited-electricity-distribution-customised-price-quality-path-annual-compliance-statement-due-date-amendment-determination-2020-4-November-2020.pdf

2 Assessment against the price path

The Determination requires Powerco to calculate an annual 'wash-up' of the difference between revenue received and allowable revenue adjusted for actual CPI, pass-through costs and recoverable costs.

The purpose of the wash-up mechanism is to restore each distributor to the position it would have been in had the forecasted quantities, pass through and recoverable costs, and CPI been made with perfect foresight, taking account of the time value of money.

The wash-up amount for the 2021 assessment period will be included in the calculation of allowable revenue and price-setting for the 2023 assessment period, beginning 1 April 2022. The two-year differential reflects the timing between the end of the 2021 assessment period (March), finalising 2021 actual revenues (around September) and setting prices for the following year (occurs around December 2021).

For presentation purposes, the tables set out in this section are aggregates of the price and quantity information. While dollar balances are rounded to the nearest thousand dollars, the underlying compliance calculations apply the whole number.

2.1 Calculation of the revenue wash-up amount

The Determination requires the wash-up amount to be calculated as demonstrated by table 1. The three components of this calculation are described in more detail throughout section 3 of this Statement.

Table 1: Wash-up amount calculation

Calculation components	\$000
Actual allowable revenue	351,415
<i>Less: Actual revenue</i>	313,593
<i>Less: Revenue forgone</i>	-
Wash-up amount	37,822

Specified in Schedule 1.5 of the Determination

The positive wash-up amount indicates an under recovery of revenue. This will be recoverable in FY23 by adding it to allowable revenue.

2.2 Calculation of actual allowable revenue

The first step is to calculate what should have been allowed for 2021: actual allowable revenue. The Determination defines actual allowable revenue as in table 2. The calculation of each component is explained in subsequent sections.

Table 2: Actual allowable revenue calculation

Calculation components	\$000
Actual net allowable revenue	241,093
<i>Plus: Actual pass-through costs</i>	3,794
<i>Plus: Actual recoverable costs</i>	98,920
<i>Plus: Revenue wash-up draw down amount</i>	7,608
Actual allowable revenue	351,415

Specified in Schedule 1.5 of the Determination

Actual net allowable revenue

Actual net allowable revenue is the maximum revenue, excluding pass-through costs and recoverable costs and any wash-up draw down amount, that Powerco can earn in the assessment period.

Actual pass-through and recoverable costs

Tables 3 and 4 contains actual pass-through and recoverable costs for 2021, with a comparison to forecast for reference.

Table 3: Actual and forecast pass-through costs

Pass-through costs	Actual \$000	Forecast \$000	Variance \$000
EA levies	1,034	1,025	9
Commerce Commission levies	632	779	(147)
UDL levies	200	195	5
Council rates	1,929	2,020	(91)
Total	3,794	4,019	(224)

Table 4: Actual and forecast recoverable costs

Recoverable costs	Actual \$000	Forecast \$000	Variance \$000
IRIS incentive adjustment	(984)	(984)	-
Transpower connection charges	14,700	14,712	(12)
Transpower interconnection charges	73,375	73,374	1
Transpower new investment charges	7,355	7,294	61
Avoided Costs of Transmission (ACOT)	4,683	4,682	1
Quality incentive adjustment	(786)	(786)	-
Capex wash-up adjustment	578	578	-
Total	98,920	98,870	50

For the 2021 assessment period actual costs were 175,000 (or 0.2%) lower than forecast, resulting in a negligible impact on the washup calculations. Costs for 2021 were forecast by Powerco in November 2020 as part of the company's annual budgeting process. Actual costs are extracted from Powerco's financial system for the assessment period.

Revenue wash-up draw down amount

The revenue wash-up draw down amount represents any under or over recovery of revenue from two years prior (2019). It is calculated in accordance with schedules 1.5 and 1.6 of the Determination where:

- The 'revenue wash-up draw down amount' for the third assessment period (2021) is the 'opening wash-up account balance'
- The 'opening wash-up account balance' for the third assessment period (2021) is the 'closing wash-up account balance' of the second assessment period (2020); and
- The 'closing wash-up account balance' for the second assessment period (2020) is the wash-up amount for the first assessment period (2019) x (1 + 67th percentile estimate of post-tax WACC)²

The calculation of the 2021 revenue wash-up draw down amount is provided in table 5.

Table 5: 2021 revenue wash-up draw down amount

Calculation components	\$000
Wash-up amount 2019	6,622 ³
<i>Plus:</i> adjustment for 67th percentile estimate of post-tax WACC	986
Revenue wash-up draw down amount 2021	7,608

³ Our 2019 annual compliance statement incorrectly disclosed the wash-up amount 2019 as \$7,179k. It should have been disclosed as \$6,622k. The \$557k difference follows the correct inclusion of \$520k actual pass-through balance 2019 (adjusted for the time-value-of money) required to calculate actual allowable revenue 2019. This was also corrected in our 2021 price-setting compliance statement.

2.3 Calculation of actual revenue

Actual revenue is calculated in table 6 as:

- actual revenue from prices is the sum of each price multiplied by each corresponding actual quantity and,
- other regulated income is income associated with the supply of electricity distribution services, other than through prices, investment related income, capital contributions, or vested assets. Notably, other regulatory income includes gains and losses on asset disposals.

Table 6: Actual revenue calculation

Calculation components	\$000
Actual revenue from prices	353,141
<i>Plus: Other regulated income</i>	<i>(39,548)</i>
Actual revenue	313,593

Specified in clause 4.2 of the Determination

Attachment A contains all schedules of prices and actual quantities used to calculate actual revenue from prices. These schedules total \$353.310m, \$172,000 higher than actual revenue from prices disclosed above. The difference relates to prior period revisions that are receipted in the current year. The disclosed balance of \$353.141m reconciles to the general ledger.

Table 7 summarises the sources of regulated income.

Table 7: Other regulated income

Calculation components	\$000
Gains/losses on asset disposals	(41,904)
Other regulated income	2,356
Total other regulated income	(39,548)

The value of gains and losses on disposals is consistent with the amount reported in the 2021 Information Disclosure. This disclosure includes a discussion about the underlying methodology used to calculate this figure as it differs from what was applied previously.

2.4 Calculation of revenue foregone

Revenue forgone for 2021 is zero due to the revenue reduction percentage for 2021 being -0.44%, which is below the 20% threshold (table 8).

Table 8: Revenue reduction percentage calculation

Calculation components	\$000
Actual revenue from prices	353,141
Forecast revenue from prices	351,589
Revenue reduction percentage	(0.44%)
Revenue forgone	Nil

The percentage is specified in clause 4.2 of the Determination as $1 - (\text{actual revenue from prices} / \text{forecast revenue from prices})$

The revenue forgone component of the wash-up calculation places a cap on the amount of revenue that may be recovered through the wash-up mechanism years. This can occur if there is a reduction in revenue from prices exceeding 20% of allowable revenue. This would most likely occur due to a significant reduction in demand.

3 Assessment against the quality path

Powerco's CPP quality path specifies separate planned and unplanned quality standards.

For presentation purposes, the tables set out in this section are aggregates of the SAIDI and SAIFI information. While results are rounded to three decimal places, the underlying calculations apply the whole number.

3.1 Planned interruptions

Planned SAIDI and SAIFI comprises all planned Class B interruptions on Powerco's network for the assessment period. Clauses 9.1 and 9.5 of the Determination specify that compliance with the planned interruptions quality standard can be assessed annually or over multiple years.

- i. **Annual:** the assessed planned SAIDI and SAIFI values for the current assessment period do not exceed the reliability limits for the current assessment period; or
- ii. **Multi-year:** the assessed planned SAIDI and SAIFI values for each of the two preceding assessment periods do not exceed the reliability limits for those preceding assessment periods.

The requirement to comply with the multi-year assessment only applies if Powerco exceeds the limit for the annual 2021 assessment. Powerco complies with the annual assessment but also provides multi-year assessment data.

Compliance with the annual assessment

Table 9: 2021 Planned interruptions annual reliability assessment

CPP requirement	Results	Assessment
Assessed planned SAIDI ≤ Limit	88.648 ≤ 92.342	Complies
Assessed planned SAIFI ≤ Limit	0.374 ≤ 0.393	Complies

Compliance with the multi-year assessment

Table 10: Planned interruptions multi-year reliability assessment

CPP requirement	Assessed planned SAIDI		Assessed planed SAIFI	
2021	88.648	✓	0.374	✓
2020	69.944	✓	0.346	✓
2019	84.044	✗	0.409	✗

Schedule 3.1 of the Determination specifies the planned reliability limits. These metrics are included in Attachment B of this document.

3.2 Unplanned interruptions

Clauses 9.7 and 9.10 of the Determination specify that compliance with the unplanned interruptions quality standard can be assessed annually or over multiple years.

- i. **Annual:** the assessed unplanned SAIDI and SAIFI values for the current assessment period does not exceed the reliability limits for the current assessment period; or
- ii. **Multi-year:** the assessed unplanned SAIDI and SAIFI values for each of the two preceding assessment periods does not exceed the reliability limits for those preceding assessment periods.

The requirement to comply with the multi-year assessment only applies if Powerco exceeds the limit for the annual 2021 assessment. Powerco complies with the annual assessment but also provides multi-year assessment data.

Compliance with the annual assessment

Table 11: 2020 Unplanned interruptions annual reliability assessment

CPP requirement	Results	Assessment
Assessed unplanned SAIDI ≤ Limit	168.962 ≤ 183.514	Complies
Assessed unplanned SAIFI ≤ Limit	1.836 ≤ 2.239	Complies

Compliance with the multi-year assessment

Table 12: Unplanned interruptions multi-year reliability assessment

CPP requirement	Assessed unplanned SAIDI		Assessed unplanned SAIFI	
2021	168.962	✓	1.836	✓
2020	181.010	✓	1.922	✓
2019	197.346	✗	2.029	✓

Schedules 3.2 and 4 of the Determination specify the unplanned reliability limits, unplanned boundary values, caps, collars and targets for the assessment period. These metrics are included in Attachment B of this Statement.

3.3 Unplanned SAIDI and SAIFI calculations

Unplanned SAIDI

To calculate unplanned SAIDI, the assessment dataset is populated by listing all unplanned (Class C) interruptions on Powerco's network for the assessment period. Unplanned SAIDI is normalised for major event day ("MED").

A MED occurs when the daily SAIDI value for unplanned interruptions exceeds Powerco's SAIDI boundary value. The SAIDI boundary value for Powerco is specified in Schedule 3.2 of the Determination. For the current regulatory period the SAIDI boundary value is 11.710 minutes.

Table 13: Calculating Powerco's unplanned SAIDI assessment values

Calculation components	Result
Assessment dataset for SAIDI	
<i>Total unplanned SAIDI for the assessment period</i>	168.962
<hr/>	
Normalise assessment dataset	
<i>For any day in the assessment dataset where the daily unplanned SAIDI value is greater than the SAIDI unplanned boundary value, replace the daily unplanned SAIDI value with the SAIDI unplanned boundary value.</i>	0.000
SAIDI unplanned	168.961

Major event days in the assessment period

There was no SAIDI major event day in the assessment period.

Unplanned SAIFI

To calculate unplanned SAIFI, the assessment dataset is populated by listing all unplanned (Class C) interruptions on Powerco's network for the assessment period. Unplanned SAIFI is normalised for MEDs.

A MED occurs when the daily SAIFI value for unplanned interruptions exceeds Powerco's SAIFI Boundary Value of 0.064.

Table 14: Calculating Powerco's unplanned SAIFI assessment values

Calculation components	Result
Assessment dataset for SAIFI _c <i>Total unplanned SAIFI for the assessment period</i>	1.836
Normalise assessment dataset <i>For any day in the assessment dataset where the daily unplanned SAIFI value is greater than the SAIFI unplanned boundary value, replace the daily unplanned SAIFI value with the SAIFI unplanned boundary value.</i>	0.000
SAIFI unplanned	1.836

Major event days in the assessment period

There was no SAIFI major event days in the assessment period.

3.4 Reliability policies and procedures

Recording interruptions

Powerco has well developed processes to capture outage / interruption information and ensure the accuracy of these records. Key aspects of this calculation include:

- The underlying reliability records are created and maintained by Powerco's Network Operations Team which initiate and manage all fault reports.
- The start of an interruption is recorded when there is a SCADA alarm for assets that have a real time link to Powerco's SCADA system. For other assets, which is the majority on our network, the interruption is recorded when Powerco is first notified of the fault by retailers or field staff.
- All fault reports contain switching sequences and where available SCADA printouts of transformers and areas affected, along with any other relevant information to support accurate evaluation.
- Details on the fault report are entered into the Powerco Outage Management System ("OMS") database. Information recorded includes the date, time and cause of the fault, voltage of the faulted circuit and the transformers affected.
 - Powerco notes the introduction of new systems to assist with the management of outages and interruptions during the 2015 assessment period. This OMS provides enhanced oversight and recording of outages, enhancing the robustness of recording processes.
- The faults recorded may be due to third party causes (transmission problems, generation problems, or the actions of other electricity industry participants or third parties) this information is also recorded in the OMS database but excluded for compliance reporting.

-
- When power is restored for less than one minute following an initial interruption the successive interruption is not counted as a new SAIFI event. The duration of the successive interruption is added to the duration of the initial interruption. This is consistent with prior year treatment.
 - When power is restored for one minute or longer following an initial interruption the successive interruption is counted as a new SAIFI event. The duration of the successive interruption is assigned to the new SAIDI event. This is consistent with prior year treatment.

Calculating SAIDI and SAIFI

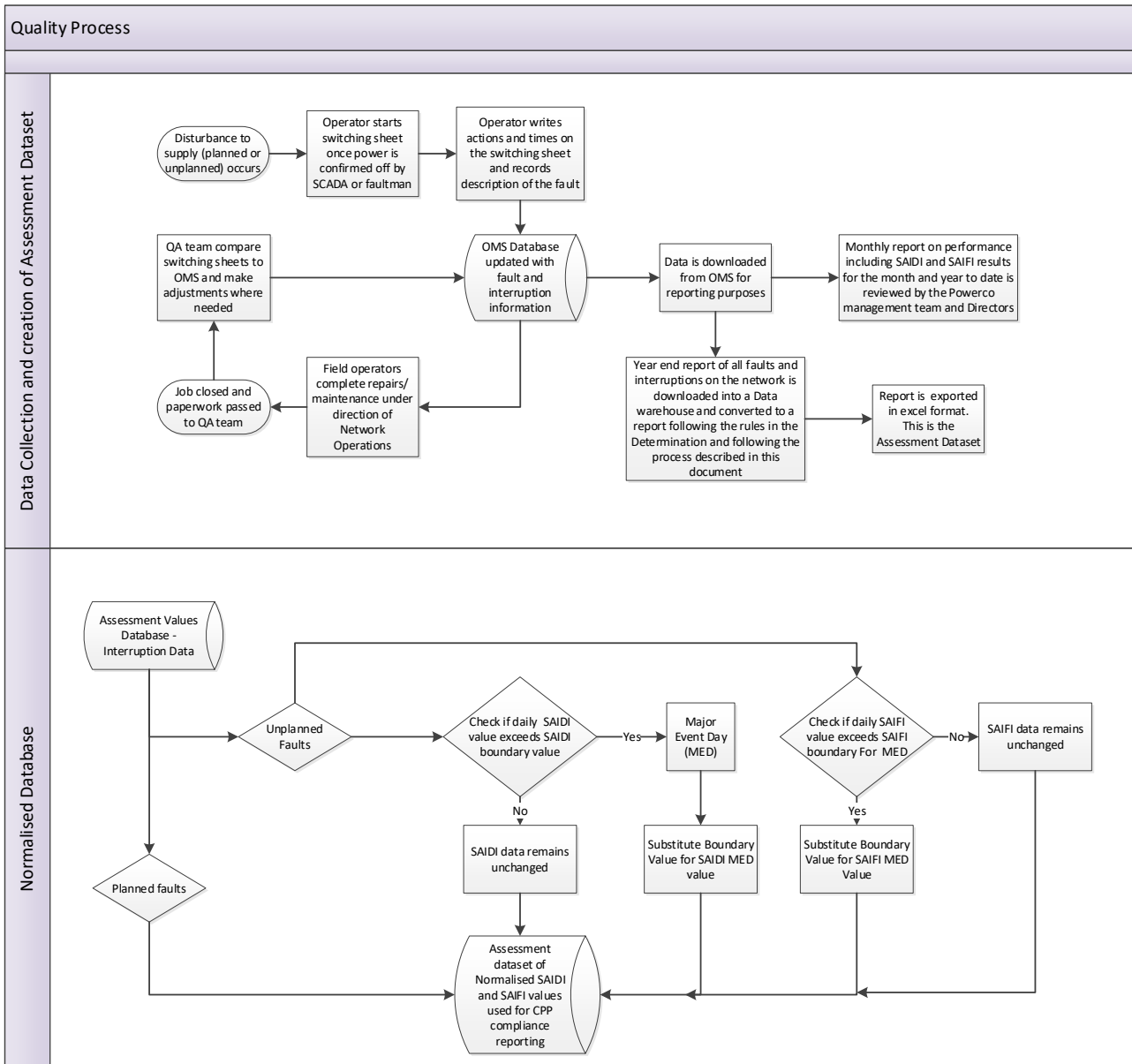
In utilising the input data noted above, Powerco applies processes to ensure compliance with Schedules 3.1 and 3.2 of the Determination, as shown diagrammatically in Figure 1. The following key calculation steps are applied:

- To calculate SAIDI and SAIFI customer connection numbers (“ICPs”) are calculated from the Geographic Information System (“GIS”) for the transformers affected. ICPs are updated to the GIS daily from the Electricity Registry.
- The customer connection number used in the annual calculation of SAIDI and SAIFI is the average of customer numbers at the end of each month of the assessment year. The sum of all customer minutes interrupted is divided by the average customer connection numbers to derive the annual SAIDI minutes. The sum of the number of customer interruptions is divided by the average customer connection numbers to derive the annual SAIFI value.
- Results are calculated using the outage / interruption records in OMS noting a range of global corrections and refinements are required as set out below.
- As specified by the Determination, data is limited to include only Powerco interruptions that cause a cessation of electricity for a period of at least one minute, affect at least one consumer and occur on an electricity line capable of conveying electricity at a voltage of at least 3.3 kV.
- The unplanned data is normalised to account for the impact of MEDs.

Removal of 3- minute communications adjustment from outage records

Powerco has applied a 3-minute communications adjustment (time reduction) to its outage records since the mid-2000s. This adjustment corrects for the impacts on raw outage data due to systems and process issues. These issues have been resolved and the adjustment is no longer required. From FY21 onwards, no adjustment is applied.

Figure 1: Powerco's process to create the normalised dataset



4 Reopener transactions

Powerco has not entered into any agreement with another EDB or Transpower for an amalgamation, merger, major transaction or non-reopener transaction in the assessment period.

**Director's Certificate for the Customised Price-quality Path
Annual Compliance Statement
For the period 1 April 2020 – 31 March 2021**

I, Paul Callow, being a director of Powerco certify that, having made all reasonable enquiry, to the best of my knowledge and belief, the attached annual compliance statement of Powerco, and related information, prepared for the purposes of the *Powerco Electricity Distribution Customised Price-Quality Path Determination 2018* has been prepared in accordance with all the relevant requirements.

Director

19 August 2021

Date



INDEPENDENT ASSURANCE REPORT TO THE DIRECTORS OF POWERCO LIMITED AND THE COMMERCE COMMISSION

Report on Powerco Limited's Electricity Customised Price-Quality Path Annual Compliance Statement 2021

We have conducted a reasonable assurance engagement on Powerco Limited's ('the Company') compliance with the Powerco Limited Electricity Distribution Customised Price-Quality Path Determination 2018 (consolidated 20 May 2020) ('the Determination'). In relation to the preparation of Sections 1, 2, 3, 4 and 5 of the Company's Annual Compliance Statement ('the Annual Compliance Statement') on pages 4 to 16 for the period 1 April 2020 to 31 March 2021.

Opinion

In our opinion:

- the Company has complied, in all material respects, with the Determination in relation to the Company's preparation of the Annual Compliance Statement; and
- as far as appears from an examination of the records, the information used in the preparation of the Annual Compliance Statement has been properly extracted from the Company's accounting and other records, sourced from its financial and non-financial systems.

Basis for Opinion

We conducted our engagement in accordance with the Standard on Assurance Engagements 3100 (Revised): Compliance Engagements ('SAE 3100 (Revised)') and the International Standard on Assurance Engagements (New Zealand) 3000 (Revised): Assurance Engagements Other than Audits or Reviews of Historical Financial Information ('ISAE (NZ) 3000 (Revised)'), both issued by the New Zealand Auditing and Assurance Standards Board.

We have obtained sufficient recorded evidence and all the explanations we required to provide a basis for our opinion.

Board of Directors' Responsibility

The Board of Directors is responsible on behalf of the Company for the preparation of the Annual Compliance Statement in accordance with the Determination. This responsibility includes the design, implementation and maintenance of internal control relevant to the preparation of the Annual Compliance Statement in accordance with the Determination.

Our Independence and Quality Control

We have complied with the independence and other ethical requirements of the Professional and Ethical Standard 1 *International Code of Ethics for Assurance Practitioners (including International Independence Standards) (New Zealand)* ('PES-1') issued by the New Zealand Auditing and Assurance Standards Board, which is founded on fundamental principles of integrity, objectivity, professional competence and due care, confidentiality and professional behaviour.

Other than in our capacity as auditor and the provision of other assurance services including the audit of financial statements, the audit of regulatory disclosure statements, greenhouse gas assurance and project quality assurance, we have no relationship with or interests in the Company. These services have not impaired our independence as auditor of the Company as required by the Determination.

The firm applies Professional and Ethical Standard 3 (Amended): *Quality Control for Firms that Perform Audits and Reviews of Financial Statements, and Other Assurance Engagements* issued by the New Zealand Auditing and Assurance Standards Board, and accordingly maintains a comprehensive system of quality control including documented policies and procedures regarding compliance with ethical requirements, professional standards and applicable legal and regulatory requirements.

Our Responsibility

Our responsibility is to express an opinion on whether the Company has complied, in all material respects, with the Determination in relation to the preparation of the Annual Compliance Statement. SAE 3100 (Revised) and ISAE (NZ) 3000 (Revised) requires that we plan and perform our procedures to obtain reasonable assurance that the Company has complied, in all material respects, with the Determination in preparing its Annual Compliance Statement.

An assurance engagement to report on the Company's compliance with the Determination in relation to the preparation of the Annual Compliance Statement involves performing procedures to obtain evidence about the compliance activity and controls

implemented to meet the requirements of the Determination. The procedures selected depend on our judgement, including the identification and assessment of risk of material non-compliance with the Determination.

In making those risk assessments, we consider internal control relevant to the Company's preparation of the Annual Compliance Statement in order to design audit procedures that are appropriate in the circumstances, but not for the purpose of expressing an opinion on the effectiveness of the Company's internal control. A reasonable assurance engagement also includes evaluating the appropriateness of accounting policies used and the reasonableness of accounting estimates, as well as evaluating the overall presentation of the Annual Compliance Statement.

Our procedures included:

- examining, on a test basis, evidence relevant to the amounts and disclosures contained on pages 4 to 16 of the Annual Compliance Statement in relation to the Customised Price Path Compliance Information and Quality Compliance Information set out in Clauses 8 and 9 of the Determination respectively;
- assessing significant estimates and judgements, if any, made by the Company in the preparation of the Annual Compliance Statement;
- assessing whether the basis of preparation of the Annual Compliance Statement has been adequately disclosed; and
- ensuring that the information used in preparing the Annual Compliance Statement has been properly extracted from the Company's accounting and other records, sourced from its financial and non-financial systems.

These procedures have been undertaken to form an opinion as to whether the Company has complied, in all material respects, with the Determination in preparing the Annual Compliance Statement for the period 1 April 2020 to 31 March 2021.

Inherent Limitations

Because of the inherent limitations of an assurance engagement, together with the inherent limitations of any system of internal control, it is possible that fraud, error or non-compliance may occur and not be detected. As the procedures performed for this engagement are not performed continuously throughout 1 April 2020 to 31 March 2021 and the procedures performed in respect of the Company's compliance with the Determination are undertaken on a test basis, our assurance engagement cannot be relied on to detect all instances where the Company may not have complied with the Determination. We did not examine every transaction, adjustment or event underlying the Compliance Statement nor do we guarantee complete accuracy of the Annual Compliance Statement. We also did not evaluate the security and controls over the electronic publication of the Compliance Statement. The opinion expressed in this report has been formed on the above basis.

Use of Report

This report is provided solely for your use and solely for the purpose of Clause 11.5(e) of the Determination. However we understand that a copy of this report has been requested by the Commerce solely for the purpose of above. We agree that a copy of our report may be provided to the Commerce Commission. This report is not to be used for any other purpose, recited or referred to in any document, copied or made available (in whole or in part) to any other person without our prior written consent. We accept or assume no duty, responsibility or liability to any party, other than you, in connection with the report or this engagement including without limitation, liability for negligence in relation to the opinion expressed in our report.

Deloitte Limited

Auckland, New Zealand
19 August 2021

The following list of appendices provides further information supporting this compliance statement.

Attachment reference	Information provided
A – Price and actual quantities for the assessment period	Details prices and corresponding actual quantities for each tariff group across Powerco’s Eastern and Western networks. The product of prices and actual quantities is Powerco’s actual revenue from prices for the assessment period in section 3 of this document.
B – Reliability limits, boundary values, target, cap and collar	Lists the SAIDI and SAIFI limits, boundary values used to determine major event days, target, cap and collar values as specified in the Determination.
C – Compliance statement references	Notes the compliance requirements from the Determination and where they are evidenced in this Statement.

Attachment A – Prices and actual quantities for the assessment period

Western Network		
Tariff Group	GXP Group	GXP

Distribution Prices FY21 (Period 1 April 2020 to 31 March 2021)										
Fixed					Variable				Individually Priced	
Network Asset Charge					Volume Charge		Demand Charge			
ICP \$/Month	ICP cents/day	Installed Capacity \$/kVA/Month	CT/VT Charge (\$/day)		On Peak c/kWh	Off Peak c/kWh	Dist-\$/kWh /Month	Trans-\$/kWh /Month	\$/kVAr /Month	Indirect Fixed (\$/ICP)

Residential+Small Commercial			
E1C	A	Brunswick	BRK
E1UC	A	Brunswick	BRK
E1C	A	Bunnythorpe	BPE
E1UC	A	Bunnythorpe	BPE
E1C	A	Carrington	CST
E1UC	A	Carrington	CST
E1C	A	Huirangi	HUI
E1UC	A	Huirangi	HUI
E1C	A	Linton	LTN
E1UC	A	Linton	LTN
E1C	A	Moturoa / New Plymouth NPL	
E1UC	A	Moturoa / New Plymouth NPL	
E1C	A	Stratford	SFD
E1UC	A	Stratford	SFD
E1C	A	Wanganui	WGN
E1UC	A	Wanganui	WGN

		0.00			5.7100	6.1800				
		15.00			5.7100	6.1800				
		0.00			5.7100	6.1800				
		15.00			5.7100	6.1800				
		0.00			5.7100	6.1800				
		15.00			5.7100	6.1800				
		0.00			5.7100	6.1800				
		15.00			5.7100	6.1800				
		0.00			5.7100	6.1800				
		15.00			5.7100	6.1800				
		0.00			5.7100	6.1800				
		15.00			5.7100	6.1800				
		0.00			5.7100	6.1800				
		15.00			5.7100	6.1800				

E1C	B	Greytown	GYT
E1UC	B	Greytown	GYT
E1C	B	Hawera	HWA
E1UC	B	Hawera	HWA
E1C	B	Mangamaire	MGM
E1UC	B	Mangamaire	MGM
E1C	B	Marton	MTN
E1UC	B	Marton	MTN
E1C	B	Masterton	MST
E1UC	B	Masterton	MST
E1C	B	Mataroa	MTR
E1UC	B	Mataroa	MTR
E1C	B	Ohakune	OKN
E1UC	B	Ohakune	OKN
E1C	B	Opunake	OPK
E1UC	B	Opunake	OPK
E1C	B	Waverley	WVY
E1UC	B	Waverley	WVY

		0.00			7.5100	7.8600				
		15.00			7.5100	7.8600				
		0.00			7.5100	7.8600				
		15.00			7.5100	7.8600				
		0.00			7.5100	7.8600				
		15.00			7.5100	7.8600				
		0.00			7.5100	7.8600				
		15.00			7.5100	7.8600				
		0.00			7.5100	7.8600				
		15.00			7.5100	7.8600				
		0.00			7.5100	7.8600				
		15.00			7.5100	7.8600				
		0.00			7.5100	7.8600				
		15.00			7.5100	7.8600				

Medium/Large Commercial			
E100	A	Carrington	CST
E100	A	Huirangi	HUI
E100	A	Moturoa / New Plymouth NPL	
E100	A	Stratford	SFD
E100	B	Hawera	HWA
E100	C	Waverley	WVY
E100	D	Opunake	OPK
E100	E	Brunswick	BRK
E100	E	Wanganui	WGN
E100	F	Marton	MTN
E100	G	Mataroa	MTR
E100	G	Ohakune	OKN
E100	H	Masterton	MST
E100	H	Greytown	GYT
E100	I	Bunnythorpe	BPE
E100	I	Linton	LTN
E100	J	Mangamaire	MGM

		291		8.06			0.28750		7.00	
		291		8.06			0.28750		7.00	
		291		8.06			0.28750		7.00	
		291		8.06			0.28750		7.00	
		291		8.06			0.58150		7.00	
		291		8.06			0.51250		7.00	
		291		8.06			0.52550		7.00	
		291		8.06			0.33750		7.00	
		291		8.06			0.33750		7.00	
		291		8.06			0.40550		7.00	
		291		8.06			0.55250		7.00	
		291		8.06			0.55250		7.00	
		291		8.06			0.49750		7.00	
		291		8.06			0.49750		7.00	
		291		8.06			0.30450		7.00	
		291		8.06			0.30450		7.00	
		291		8.06			0.36350		7.00	

E300	A	Carrington	CST
E300	A	Huirangi	HUI
E300	A	Moturoa / New Plymouth NPL	
E300	A	Stratford	SFD
E300	B	Hawera	HWA
E300	C	Waverley	WVY
E300	D	Opunake	OPK
E300	E	Brunswick	BRK
E300	E	Wanganui	WGN
E300	F	Marton	MTN
E300	G	Mataroa	MTR
E300	G	Ohakune	OKN
E300	H	Masterton	MST
E300	H	Greytown	GYT
E300	I	Bunnythorpe	BPE
E300	I	Linton	LTN
E300	J	Mangamaire	MGM

			1.85	8.06			0.12050		7.00	
			1.85	8.06			0.12050		7.00	
			1.85	8.06			0.12050		7.00	
			1.85	8.06			0.12050		7.00	
			1.85	8.06			0.22650		7.00	
			1.85	8.06			0.45150		7.00	
			1.85	8.06			0.25450		7.00	
			1.85	8.06			0.12850		7.00	
			1.85	8.06			0.12850		7.00	
			1.85	8.06			0.20450		7.00	
			1.85	8.06			0.34450		7.00	
			1.85	8.06			0.34450		7.00	
			1.85	8.06			0.29450		7.00	
			1.85	8.06			0.29450		7.00	
			1.85	8.06			0.20250		7.00	
			1.85	8.06			0.20250		7.00	
			1.85	8.06			0.21450		7.00	

SPECIAL	Asset Based								7.00	136.120
SPECIAL	Hau Nui Generation									114.320
SPECIAL	Tararua Generation									249.115

				8.06						
				8.06						
				8.06						

Western Network			Quantities FY21 (1 April 2020 to 31 March 2021)											
Tariff Group	GVP Group	GVP	ICP No's (Average)	ICP Days	ICP Months	kVA Installed	CT/VTs	kWh Day	kWh Night	kWh On peak	kWh Off Peak	kWh Demand (AMD for E100/E300)	OPD (kW)	\$KVAr /Month
Residential/Small Commercial														
E1C	A	Burnswick BRK	5,861	2,146,416	-	-	-	20,707,132	10,680,893	13,960,194	31,388,025	124,918	-	-
E1C	A	Burnswick BRK	6,552	2,391,530	-	-	-	23,315,793	12,026,460	15,718,884	35,342,253	140,655	-	-
E1C	A	Bunnythorpe BPE	14,544	5,308,622	-	-	-	63,260,677	31,457,151	41,713,234	94,717,829	316,500	-	-
E1C	A	Bunnythorpe BPE	19,347	7,061,985	-	-	-	83,817,364	41,679,217	55,298,034	125,493,581	419,248	-	-
E1C	A	Carrington CST	10,986	4,010,654	-	-	-	41,359,738	19,643,343	27,286,671	61,033,082	211,212	-	-
E1C	A	Carrington CST	17,456	6,385,946	-	-	-	65,461,377	31,090,145	43,187,464	96,551,522	334,233	-	-
E1C	A	Huirangi HUI	4,217	1,539,192	-	-	-	14,445,856	8,456,781	9,347,143	22,932,637	85,844	-	-
E1C	A	Huirangi HUI	5,863	2,140,024	-	-	-	19,968,772	11,689,963	12,920,727	31,658,736	118,664	-	-
E1C	A	Linton LTN	7,244	2,644,074	-	-	-	30,827,563	15,894,484	19,993,953	46,722,047	166,363	-	-
E1C	A	Linton LTN	10,800	3,942,023	-	-	-	46,167,169	23,803,481	29,942,820	69,970,650	249,144	-	-
E1C	A	New Plymouth MPL	-	-	-	-	-	-	-	-	-	-	-	-
E1C	A	New Plymouth MPL	3,719	1,387,070	-	-	-	23,072,326	11,568,688	15,194,786	34,844,711	119,148	-	-
E1C	A	Stratford SFD	4,599	1,678,522	-	-	-	28,296,714	14,188,247	18,636,421	42,494,961	146,127	-	-
E1C	A	Stratford SFD	4,553	1,661,767	-	-	-	17,102,306	8,182,248	10,881,081	25,284,554	101,856	-	-
E1C	A	Wanganui WGN	5,336	1,948,205	-	-	-	20,205,638	9,666,973	12,855,529	29,872,612	120,339	-	-
E1C	A	Wanganui WGN	-	-	-	-	-	-	-	-	-	-	-	-
Medium/Large Commercial														
E100	A	Carrington CST	40	-	474	-	-	-	-	-	-	1,818,241	639,914	3,445
E100	A	Huirangi HUI	10	-	120	-	-	-	-	-	-	516,295	117,331	2,539
E100	A	New Plymouth MPL	-	-	-	-	-	-	-	-	-	-	0	-
E100	A	Stratford SFD	3	-	104	-	-	-	-	-	-	444,955	179,150	1,476
E100	B	Hawera HWA	10	-	120	-	-	-	-	-	-	622,944	236,959	1,713
E100	C	Waverley WVY	2	-	19	-	-	-	-	-	-	54,600	16,390	25
E100	D	Opunake OPK	1	-	32	-	-	-	-	-	-	45,260	4,745	355
E100	E	Burnswick BRK	10	-	124	-	-	-	-	-	-	533,821	253,076	974
E100	E	Wanganui WGN	9	-	108	-	-	-	-	-	-	347,115	163,520	922
E100	F	Marlton MTN	6	-	72	-	-	-	-	-	-	300,955	162,565	616
E100	G	Ohakune OKN	4	-	52	-	-	-	-	-	-	280,645	131,325	757
E100	H	Masterton MST	24	-	296	-	-	-	-	-	-	1,181,761	507,836	3,382
E100	H	Greytown GYT	5	-	60	-	-	-	-	-	-	248,200	130,670	1,568
E100	I	Bunnythorpe BPE	59	-	713	-	-	-	-	-	-	2,949,899	1,383,477	6,360
E100	I	Linton LTN	37	-	447	-	-	-	-	-	-	1,770,088	698,297	5,048
E100	J	Mangamaire MGM	2	-	24	-	-	-	-	-	-	106,215	37,595	873
E300	A	Carrington CST	52	-	-	452,644	11	-	-	-	-	7,284,534	2,658,158	9,880
E300	A	Huirangi HUI	17	-	-	158,600	3	-	-	-	-	3,041,911	1,550,521	3,499
E300	A	New Plymouth MPL	-	-	-	-	-	-	-	-	-	-	0	-
E300	A	Stratford SFD	11	-	-	85,200	-	-	-	-	-	1,763,680	489,465	5,608
E300	B	Hawera HWA	6	-	-	70,200	1	-	-	-	-	1,232,970	531,440	1,488
E300	C	Waverley WVY	1	-	-	18,000	-	-	-	-	-	435,810	312,075	1,005
E300	D	Opunake OPK	2	-	-	36,000	2	-	-	-	-	622,325	313,170	3,442
E300	E	Burnswick BRK	14	-	-	121,200	2	-	-	-	-	1,982,316	1,078,211	3,934
E300	E	Wanganui WGN	17	-	-	265,000	5	-	-	-	-	3,321,915	1,620,966	8,502
E300	F	Marlton MTN	9	-	-	89,400	-	-	-	-	-	1,447,955	523,411	4,345
E300	G	Marlton MTR	2	-	-	36,000	1	-	-	-	-	562,100	342,005	361
E300	G	Ohakune OKN	-	-	-	-	-	-	-	-	-	-	0	-
E300	H	Masterton MST	20	-	-	170,400	1	-	-	-	-	2,970,371	1,397,586	3,535
E300	H	Greytown GYT	2	-	-	13,800	-	-	-	-	-	224,475	27,010	1,182
E300	I	Bunnythorpe BPE	53	-	-	892,536	13	-	-	-	-	9,634,638	4,439,366	11,517
E300	I	Linton LTN	30	-	-	276,313	4	-	-	-	-	4,584,613	2,218,762	6,351
E300	J	Mangamaire MGM	1	-	-	9,000	1	-	-	-	-	196,500	15,330	526
SPECIAL		Asset Based	32	-	-	-	-	-	-	-	-	-	-	25,094
SPECIAL		Hau Nui Generation	1	-	-	-	-	-	-	-	-	-	-	-
SPECIAL		Taranaki Generation	1	-	-	-	-	-	-	-	-	-	-	-
Western Region Total			175,528	63,685,483	2,735	2,381,292	46	736,835,667	389,424,440	480,733,620	1,126,260,107	54,678,873	22,350,311	120,297

Western Network		
Tariff Group	GXP Group	GXP

Distribution Revenue (FY21 Prices)						
Fixed (Monthly)	Fixed (Daily)	Variable	Demand	Non-standard	Total	
Residential+Small Commercial						
E1C	A	Brunswick	BRK	-	2,736,907	2,736,907
E1UC	A	Brunswick	BRK	358,730	3,081,700	3,440,429
E1C	A	Bunnythorpe	BPE	-	8,235,387	8,235,387
E1UC	A	Bunnythorpe	BPE	1,059,235	10,911,493	11,970,728
E1C	A	Carrington	CST	-	5,328,059	5,328,059
E1UC	A	Carrington	CST	957,877	8,432,889	9,390,766
E1C	A	Huirangi	HUI	-	1,949,105	1,949,105
E1UC	A	Huirangi	HUI	321,004	2,694,283	3,015,287
E1C	A	Linton	LTN	-	4,029,077	4,029,077
E1UC	A	Linton	LTN	591,303	6,033,921	6,625,225
E1C	A	New Plymouth	NPL	-	-	-
E1UC	A	New Plymouth	NPL	-	-	-
E1C	A	Stratford	SFD	-	3,008,437	3,008,437
E1UC	A	Stratford	SFD	251,778	3,689,653	3,941,431
E1C	A	Wanganui	WGN	-	2,183,895	2,183,895
E1UC	A	Wanganui	WGN	292,231	2,580,178	2,872,409
Medium/Large Commercial						
E1C	B	Greytown	GYT	-	2,421,485	2,421,485
E1UC	B	Greytown	GYT	231,597	3,417,529	3,649,125
E1C	B	Hawera	HWA	-	2,150,704	2,150,704
E1UC	B	Hawera	HWA	355,000	5,082,630	5,437,630
E1C	B	Mangamaire	MGM	-	1,386,981	1,386,981
E1UC	B	Mangamaire	MGM	134,084	1,750,982	1,885,066
E1C	B	Marton	MTN	-	2,922,376	2,922,376
E1UC	B	Marton	MTN	132,494	1,874,993	2,007,487
E1C	B	Masterton	MST	-	6,674,274	6,674,274
E1UC	B	Masterton	MST	493,103	6,346,753	6,839,857
E1C	B	Mataroa	MTR	-	1,118,563	1,118,563
E1UC	B	Mataroa	MTR	60,837	750,659	811,496
E1C	B	Ohakune	OKN	-	394,067	394,067
E1UC	B	Ohakune	OKN	32,742	396,703	429,445
E1C	B	Opunake	OPK	-	1,064,731	1,064,731
E1UC	B	Opunake	OPK	113,688	2,282,818	2,396,506
E1C	B	Waverley	WVY	-	-	-
E1UC	B	Waverley	WVY	73,784	1,244,586	1,318,370
Special						
E100	A	Carrington	CST	138,077	-	684,937
E100	A	Huirangi	HUI	34,920	2,942	204,067
E100	A	New Plymouth	NPL	-	-	-
E100	A	Stratford	SFD	30,377	-	168,636
E100	B	Hawera	HWA	34,920	-	328,555
E100	C	Waverley	WVY	5,526	-	33,683
E100	D	Opunake	OPK	3,492	-	29,758
E100	E	Brunswick	BRK	36,122	-	223,106
E100	E	Wanganui	WGN	31,428	-	155,032
E100	F	Marton	MTN	20,935	-	147,276
E100	G	Mataroa	MTR	15,228	-	175,581
E100	G	Ohakune	OKN	-	-	-
E100	H	Masterton	MST	83,101	-	694,702
E100	H	Greytown	GYT	17,460	-	151,899
E100	I	Bunnythorpe	BPE	207,402	2,942	1,153,103
E100	I	Linton	LTN	130,042	-	704,368
E100	J	Mangamaire	MGM	6,984	-	51,703
Other						
E300	A	Carrington	CST	837,392	32,901	1,818,447
E300	A	Huirangi	HUI	289,710	8,826	689,578
E300	A	New Plymouth	NPL	-	-	-
E300	A	Stratford	SFD	157,620	-	409,401
E300	B	Hawera	HWA	129,870	2,942	422,498
E300	C	Waverley	WVY	33,300	-	237,105
E300	D	Opunake	OPK	66,600	5,884	254,961
E300	E	Brunswick	BRK	224,220	5,884	512,370
E300	E	Wanganui	WGN	471,750	14,710	1,037,089
E300	F	Marton	MTN	165,390	2,942	494,852
E300	G	Mataroa	MTR	66,600	-	262,772
E300	G	Ohakune	OKN	-	-	-
E300	H	Masterton	MST	315,240	2,942	1,217,703
E300	H	Greytown	GYT	25,530	-	99,914
E300	I	Bunnythorpe	BPE	1,096,189	38,245	3,166,064
E300	I	Linton	LTN	509,330	11,768	1,493,938
E300	J	Mangamaire	MGM	16,650	2,942	46,621
Special						
SPECIAL		Asset Based		-	175,659	4,542,835
SPECIAL		Hau Nui Generation		-	-	114,320
SPECIAL		Tararua Generation		-	-	249,115
Western Region Total						
5,201,404	5,595,355	106,175,819	11,908,106	4,730,611	133,611,294	

Western Network			
Tariff Group	GXP Group	GXP	

Transmission Revenue (FY21 Prices)								
Fixed (Monthly)	Fixed (Daily)	Variable	Demand	Non-standard	Total			
Residential/Small Commercial								
E1C	A	Brunswick	BRK	-	946,501	946,501		
E1UC	A	Brunswick	BRK	-	1,065,740	1,065,740		
E1C	A	Bunnythorpe	BPE	-	2,828,157	2,828,157		
E1UC	A	Bunnythorpe	BPE	-	3,747,173	3,747,173		
E1C	A	Carrington	CST	-	1,850,036	1,850,036		
E1UC	A	Carrington	CST	-	2,928,111	2,928,111		
E1C	A	Huirangi	HUI	-	633,736	633,736		
E1UC	A	Huirangi	HUI	-	876,025	876,025		
E1C	A	Linton	LTN	-	1,355,590	1,355,590		
E1UC	A	Linton	LTN	-	2,030,123	2,030,123		
E1C	A	New Plymouth	NPL	-	-	-		
E1UC	A	New Plymouth	NPL	-	-	-		
E1C	A	Stratford	SFD	-	1,030,207	1,030,207		
E1UC	A	Stratford	SFD	-	1,263,482	1,263,482		
E1C	A	Wanganui	WGN	-	737,737	737,737		
E1UC	A	Wanganui	WGN	-	871,605	871,605		
Greytown								
E1C	B	Greytown	GYT	-	551,992	551,992		
E1UC	B	Greytown	GYT	-	779,046	779,046		
E1C	B	Hawera	HWA	-	509,378	509,378		
E1UC	B	Hawera	HWA	-	1,203,782	1,203,782		
E1C	B	Mangamaire	MGM	-	341,219	341,219		
E1UC	B	Mangamaire	MGM	-	430,769	430,769		
E1C	B	Marion	MTN	-	697,854	697,854		
E1UC	B	Marion	MTN	-	447,742	447,742		
E1C	B	Masterton	MST	-	1,618,762	1,618,762		
E1UC	B	Masterton	MST	-	1,539,326	1,539,326		
E1C	B	Mataroa	MTR	-	269,971	269,971		
E1UC	B	Mataroa	MTR	-	181,176	181,176		
E1C	B	Ohakune	OKN	-	93,554	93,554		
E1UC	B	Ohakune	OKN	-	94,180	94,180		
E1C	B	Opunake	OPK	-	240,625	240,625		
E1UC	B	Opunake	OPK	-	515,908	515,908		
E1C	B	Waverley	WVY	-	-	-		
E1UC	B	Waverley	WVY	-	283,537	283,537		
Medium/Large Commercial								
E100	A	Carrington	CST	-	333,026	333,026		
E100	A	Huirangi	HUI	-	46,522	46,522		
E100	A	New Plymouth	NPL	-	-	-		
E100	A	Stratford	SFD	-	71,033	71,033		
E100	B	Hawera	HWA	-	84,748	84,748		
E100	C	Waverley	WVY	-	6,708	6,708		
E100	D	Opunake	OPK	-	1,943	1,943		
E100	E	Brunswick	BRK	-	84,148	84,148		
E100	F	Wanganui	WGN	-	54,371	54,371		
E100	F	Marion	MTN	-	50,802	50,802		
E100	G	Mataroa	MTR	-	53,778	53,778		
E100	G	Ohakune	OKN	-	-	-		
E100	H	Masterton	MST	-	224,209	224,209		
E100	H	Greytown	GYT	-	57,691	57,691		
E100	I	Bunnythorpe	BPE	-	455,856	455,856		
E100	I	Linton	LTN	-	230,089	230,089		
E100	J	Mangamaire	MGM	-	16,598	16,598		
E300								
E300	A	Carrington	CST	-	1,053,960	1,053,960		
E300	A	Huirangi	HUI	-	614,781	614,781		
E300	A	New Plymouth	NPL	-	-	-		
E300	A	Stratford	SFD	-	194,073	194,073		
E300	B	Hawera	HWA	-	217,625	217,625		
E300	C	Waverley	WVY	-	127,795	127,795		
E300	D	Opunake	OPK	-	128,243	128,243		
E300	E	Brunswick	BRK	-	358,505	358,505		
E300	E	Wanganui	WGN	-	538,971	538,971		
E300	F	Marion	MTN	-	163,566	163,566		
E300	G	Mataroa	MTR	-	140,051	140,051		
E300	G	Ohakune	OKN	-	-	-		
E300	H	Masterton	MST	-	617,034	617,034		
E300	H	Greytown	GYT	-	11,925	11,925		
E300	I	Bunnythorpe	BPE	-	1,462,771	1,462,771		
E300	I	Linton	LTN	-	731,082	731,082		
E300	J	Mangamaire	MGM	-	6,768	6,768		
SPECIAL								
SPECIAL	Asset Based			-	5,083,972	5,083,972		
SPECIAL	Hau Nui Generation			-	-	-		
SPECIAL	Tararua Generation			-	-	-		
Western Region Total								
				-	31,963,046	8,138,670	5,083,972	45,185,688

Eastern Network			Distribution Prices FY21 (Prices 1 April 2020 to 31 March 2021)																	Individually Priced
			Fixed		Variable														Demand Charge	
Tariff Group	Network Group	Tariff Description	Network Asset Charge		Volume Charge															\$/kVAr /Month
			ICP \$/Month	ICP cents/day	Uncontrolled c/kWh	All Inclusive c/kWh	Controlled c/kWh	Night Only c/kWh	Night Rate c/kWh	On Peak Uncontrolled c/kWh	Off Peak Uncontrolled c/kWh	On Peak All Inclusive c/kWh	Off Peak All Inclusive c/kWh	Summer Day c/kWh	Summer Night c/kWh	Winter Day c/kWh	Winter Night c/kWh	Winter AM Peak c/kWh	Winter PM Peak c/kWh	
			24UC	AICO	CTRL	NITE	UNML	PEAK	OFFPK	PKIN	OPIN	TS/1	TS/2	TW/1/3/5	TW/6	TW/2	TW/4			
Residential+Small Commercial																				
V05	Valley	Low Usage - Controlled	15.0000	7.4500	7.1800	5.7100	5.2000	6.9500												
V05U	Valley	Low Usage - Uncontrolled																		
V05S	Valley	Low Usage - TOU	15.0000	7.4500	7.1800	5.7100	5.2000	6.9500	7.4500	7.4500	7.2800	7.1800								
V06	Valley	Residential - Standard Controlled	85.0000	4.2600	3.9900	2.5200	2.0100	6.9500												
V06U	Valley	Residential - Standard Uncontrolled																		
V06S	Valley	Residential - Standard TOU	85.0000	4.2600	3.9900	2.5200	2.0100	6.9500	4.2600	4.2600	4.0900	3.9900								
T05	Tauranga	Low Usage - Controlled	15.0000	6.6800	6.5600	5.4600	5.1700	6.6000												
T05U	Tauranga	Low Usage - Uncontrolled																		
T05S	Tauranga	Low Usage - TOU	15.0000	6.6800	6.5600	5.4600	5.1700	6.6000	6.6900	6.6900	6.7400	6.5200								
T06	Tauranga	Standard Residential & Commercial - Controlled	85.0000	3.4900	3.3700	2.2700	1.9800	6.6000												
T06U	Tauranga	Standard Residential & Commercial - Uncontrolled																		
T06S	Tauranga	Standard Residential & Commercial - TOU	85.0000	3.4900	3.3700	2.2700	1.9800	6.6000	3.4900	3.4900	3.5500	3.3300								
Unmetered Supply																				
V01	Valley	Unmetered/Streetlighting						6.9500												
V02	Valley	Unmetered/Streetlighting	9.7400																	
T01	Tauranga	Unmetered/Streetlighting						6.6000												
T02	Tauranga	Unmetered/Streetlighting	9.8200																	
Medium Commercial																				
V24	Valley	Commercial three phase 100A	991.0000	3.6000	3.6000														7.0000	
V28	Valley	> 200 Amp up to 299 kVA	2,600.0000	2.9500		2.2400													7.0000	
T22	Tauranga	Capacity 100 – 199kVA	999.0000	4.2600		2.2400	2.3300												7.0000	
T24	Tauranga	Capacity 200 -299kVA	2,500.0000	3.1300		2.0600													7.0000	
T41	Tauranga	capacity 200 kVA utilised	2,500.0000	3.1300									3.1300	3.1300	3.1300	3.1300	3.1300	3.1300	7.0000	
Large Commercial / Industrial																				
V40	Valley	Individual ICP prices																	7.0000	
V60	Valley	Individual ICP prices																	7.0000	
V601	Kinleith																		7.0000	
T50	Tauranga	Individual ICP prices																	7.0000	
T601	Tauranga	Individual ICP prices																	7.0000	

Eastern Network			Transmission Prices FY21 (Prices 1 April 2020 to 31 March 2021)																	Individually Priced
			Fixed		Variable														Demand Charge	
Tariff Group	Network Group	Tariff Description	Network Asset Charge		Volume Charge															Indirect Fixed (\$/ICP)
			ICP \$/Month	ICP cents/day	Uncontrolled c/kWh	All Inclusive c/kWh	Controlled c/kWh	Night Only c/kWh	Night Rate c/kWh	On Peak Uncontrolled c/kWh	Off Peak Uncontrolled c/kWh	On Peak All Inclusive c/kWh	Off Peak All Inclusive c/kWh	Summer Day c/kWh	Summer Night c/kWh	Winter Day c/kWh	Winter Night c/kWh	Winter AM Peak c/kWh	Winter PM Peak c/kWh	
			24UC	AICO	CTRL	NITE	UNML	PEAK	OFFPK	PKIN	OPIN	TS/1	TS/2	TW/1/3/5	TW/6	TW/2	TW/4			
Residential+Small Commercial																				
V05	Valley	Low Usage - Controlled			2.9200	2.6400	1.8800			3.9800										
V05U	Valley	Low Usage - Uncontrolled																		
V05S	Valley	Low Usage - TOU			2.9200	2.6400	1.8800			3.9800	9.7300									
V06	Valley	Residential - Standard Controlled			2.9200	2.6400	1.8800			3.9800										
V06U	Valley	Residential - Standard Uncontrolled																		
V06S	Valley	Residential - Standard TOU			2.9200	2.6400	1.8800			3.9800	9.7300									
T05	Tauranga	Low Usage - Controlled			3.0700	2.6600	1.3300			3.6800										
T05U	Tauranga	Low Usage - Uncontrolled																		
T05S	Tauranga	Low Usage - TOU			3.0700	2.6600	1.3300			3.6800	9.9000									
T06	Tauranga	Standard Residential & Commercial - Controlled			3.0700	2.6600	1.3300			3.6800										
T06U	Tauranga	Standard Residential & Commercial - Uncontrolled																		
T06S	Tauranga	Standard Residential & Commercial - TOU			3.0700	2.6600	1.3300			3.6800	9.9000									
Unmetered Supply																				
V01	Valley	Unmetered/Streetlighting			3.9800					3.9800										
V02	Valley	Unmetered/Streetlighting		5.5700																
T01	Tauranga	Unmetered/Streetlighting			3.6800					3.6800										
T02	Tauranga	Unmetered/Streetlighting		5.4800																
Medium Commercial																				
V24	Valley	Commercial three phase 100A			2.3400	2.3400														
V28	Valley	> 200 Amp up to 299 kVA			1.7100		1.5700													
T22	Tauranga	Capacity 100 – 199kVA			2.0800		0.9600													
T24	Tauranga	Capacity 200 -299kVA			1.5000		0.8800													
T41	Tauranga	capacity 200 kVA unutilised			1.5000							1.5000	1.5000	1.5000	1.5000	1.5000	1.5000			
Large Commercial / Industrial																				
V40	Valley	Individual ICP prices																		14,368
V60	Valley	Individual ICP prices																		58,761
V601	Kinleith	Individual ICP prices																		3,290,259.9900
T50	Tauranga	Individual ICP prices																		16,108.0112
T601	Tauranga	Individual ICP prices																		120,597

Eastern Network

Tariff Group Network Group Tariff Description			Quantities FY21 (1 April 2020 to 31 March 2021)																			
			ICP No.'s (Average)	ICP Days	kWh Uncontrolled	kWh All Inclusive	kWh Controlled	kWh Nite Only	kWh Night	kWh Uncontrolled On peak	kWh Uncontrolled Off Peak	kWh All Inclusive On Peak	kWh All Inclusive Off Peak	Distributed Generation	kWh Summer Day	kWh Summer Night	kWh Winter Day	kWh Winter Night	kWh Winter AM Peak	kWh Winter PM Peak	kVA Demand pa	
					24UC	AICO	CTRL	NITE	UNML	PEAK	OPPK	PKIN	OPIN	24DG	TS/1	TS/2	TW/1/3/5	TW/6	TW/2	TW/4		
Residential+Small Commercial																						
V05	Valley	Low Usage - Controlled	2,983	1,088,891	10,806,253	1,144,161	2,480,471	104,163	-	-	-	-	-	84,675	-	-	-	-	-	-	-	-
V05U	Valley	Low Usage - Uncontrolled	-	-	-	-	-	-	-	-	-	-	-	-	-	-	-	-	-	-	-	-
V05S	Valley	Low Usage - TOU	33,736	12,313,700	15,625,005	1,032,428	33,021,219	285,392	-	31,910,986	73,208,186	1,493,193	3,383,630	1,004,216	-	-	-	-	-	-	-	-
V06	Valley	Residential - Standard Controlled	5,044	1,840,879	45,152,577	6,443,402	3,193,430	447,592	183	-	-	-	-	107,493	-	-	-	-	-	-	-	-
V06U	Valley	Residential - Standard Uncontrolled	-	-	-	-	-	-	-	-	-	-	-	-	-	-	-	-	-	-	-	-
V06S	Valley	Residential - Standard TOU	30,283	11,053,385	85,391,882	5,270,035	34,554,939	2,046,839	-	61,466,478	146,357,351	2,973,041	6,804,277	717,889	-	-	-	-	-	-	-	-
T05	Tauranga	Low Usage - Controlled	7,896	2,882,006	22,088,332	9,646,084	7,017,843	1,300,324	-	-	-	-	-	410,724	-	-	-	-	-	-	-	-
T05U	Tauranga	Low Usage - Uncontrolled	-	-	-	-	-	-	-	-	-	-	-	-	-	-	-	-	-	-	-	-
T05S	Tauranga	Low Usage - TOU	23,479	8,569,793	6,651,100	1,460,196	25,497,970	2,697,462	-	22,096,581	47,994,048	5,015,655	10,214,764	1,315,873	-	-	-	-	-	-	-	-
T06	Tauranga	Standard Residential & Commercial - Controlled	19,879	7,255,729	146,581,559	21,913,457	21,986,488	2,169,146	45,699	-	-	-	-	552,406	-	-	-	-	-	-	-	-
T06U	Tauranga	Standard Residential & Commercial - Uncontrolled	-	-	-	-	-	-	-	-	-	-	-	-	-	-	-	-	-	-	-	-
T06S	Tauranga	Standard Residential & Commercial - TOU	35,697	13,029,277	32,757,526	2,624,759	55,613,797	3,305,892	9,575	56,757,183	128,649,616	9,352,712	19,498,385	1,679,730	-	-	-	-	-	-	-	-
Unmetered Supply																						
V01	Valley	Unmetered/Streetlighting	-	-	-	-	-	-	326,274	-	-	-	-	-	-	-	-	-	-	-	-	-
V02	Valley	Unmetered/Streetlighting	11,937	4,357,035	-	-	-	-	469,728	-	-	-	-	-	-	-	-	-	-	-	-	-
T01	Tauranga	Unmetered/Streetlighting	-	-	-	-	-	-	1,967,549	-	-	-	-	-	-	-	-	-	-	-	-	-
T02	Tauranga	Unmetered/Streetlighting	13,920	5,080,861	-	-	-	-	4,250,635	-	-	-	-	-	-	-	-	-	-	-	-	-
Medium Commercial																						
V24	Valley	Commercial three phase 100A	510	186,259	45,872,872	16,307,674	-	-	-	-	-	-	-	60,726	-	-	-	-	-	-	-	-
V28	Valley	> 200 Amp up to 299 kVA	44	15,897	10,474,237	-	-	-	-	-	-	-	-	-	-	-	-	-	-	-	-	1,022
T22	Tauranga	Capacity 100 – 199kVA	633	230,875	55,812,817	-	163,565	224,358	-	-	-	-	-	14,905	-	-	-	-	-	-	-	-
T24	Tauranga	Capacity 200 –299kVA	56	20,610	9,102,383	-	-	-	-	-	-	-	-	1,274	-	-	-	-	-	-	-	653
T41	Tauranga	capacity 200 kVA unutilised	83	30,320	-	-	-	-	-	-	-	-	-	-	10,352,430	3,458,570	4,962,619	2,800,255	1,691,612	1,440,917	-	9,327
Large Commercial / Industrial																						
V40	Valley	Individual ICP prices	86	-	60,544,176	-	-	-	-	-	-	-	-	-	-	-	-	-	-	-	-	17,231
V60	Valley	Individual ICP prices	24	-	282,316,365	-	-	-	-	-	-	-	-	-	-	-	-	-	-	-	-	40,463
V601	Kiwieth	Individual ICP prices	1	-	311,143,886	-	-	-	-	-	-	-	-	-	-	-	-	-	-	-	-	-
T50	Tauranga	Individual ICP prices	216	-	168,230,728	-	-	-	-	-	-	-	-	-	-	-	-	-	-	-	-	35,455
T601	Tauranga	Individual ICP prices	33	-	189,985,358	-	-	-	-	-	-	-	-	-	-	-	-	-	-	-	-	30,545
Eastern Region Total			186,539	67,955,517	1,498,537,056	65,842,197	183,529,721	12,581,167	7,069,643	172,231,228	396,209,201	18,834,601	39,901,057	5,949,911	10,352,430	3,458,570	4,962,619	2,800,255	1,691,612	1,440,917	-	134,697

Eastern Network		
Tariff Group	Network Group	Tariff Description
Residential+Small Commercial		
V05	Valley	Low Usage - Controlled
V05U	Valley	Low Usage - Uncontrolled
V05S	Valley	Low Usage - TOU
V06	Valley	Residential - Standard Controlled
V06U	Valley	Residential - Standard Uncontrolled
V06S	Valley	Residential - Standard TOU
T05	Tauranga	Low Usage - Controlled
T05U	Tauranga	Low Usage - Uncontrolled
T05S	Tauranga	Low Usage - TOU
T06	Tauranga	Standard Residential & Commercial - Controlled
T06U	Tauranga	Standard Residential & Commercial - Uncontrolled
T06S	Tauranga	Standard Residential & Commercial - TOU
Unmetered Supply		
V01	Valley	Unmetered/Streetlighting
V02	Valley	Unmetered/Streetlighting
T01	Tauranga	Unmetered/Streetlighting
T02	Tauranga	Unmetered/Streetlighting
Medium Commercial		
V24	Valley	Commercial three phase 100A
V28	Valley	> 200 Amp up to 299 kVA
T22	Tauranga	Capacity 100 – 199kVA
T24	Tauranga	Capacity 200 -299kVA
T41	Tauranga	capacity 200 kVA unitised
Large Commercial / Industrial		
V40	Valley	Individual ICP prices
V60	Valley	Individual ICP prices
V601	Kinleith	
T50	Tauranga	Individual ICP prices
T601	Tauranga	Individual ICP prices
Eastern Region Total		

Distribution Revenue (FY21 Prices)					
Fixed (Monthly)	Fixed (Daily)	Variable	Demand	Non-standard	Total
-	163,334	1,034,268	-	-	1,197,602
-	-	-	-	-	-
-	1,847,055	11,321,571	-	-	13,168,626
-	1,564,747	2,270,075	-	-	3,834,822
-	-	-	-	-	-
-	9,395,377	14,006,278	-	-	23,401,655
-	-	-	-	-	-
-	432,301	2,558,685	-	-	2,990,986
-	-	-	-	-	-
-	1,285,469	7,757,842	-	-	9,043,311
-	6,167,370	6,399,238	-	-	12,566,608
-	-	-	-	-	-
-	11,074,885	10,012,229	-	-	21,087,114
-	-	-	-	-	-
-	-	22,676	-	-	22,676
-	424,375	-	-	-	424,375
-	-	129,858	-	-	129,858
-	498,941	-	-	-	498,941
-	-	-	-	-	-
-	1,845,827	2,238,500	-	-	4,084,326
-	413,322	308,990	7,157	-	729,469
-	-	-	-	-	-
-	2,306,441	2,386,517	-	-	4,692,959
-	515,250	284,905	4,569	-	804,724
-	758,000	773,310	65,291	-	1,596,601
-	-	-	-	-	-
-	-	-	120,620	2,258,769	2,379,388
-	-	-	283,240	6,436,040	6,719,280
-	-	-	-	4,239,294	4,239,294
-	-	-	-	-	-
-	-	-	248,188	5,552,336	5,800,525
-	-	-	213,815	3,883,602	4,097,417
-	-	-	-	-	-
-	38,692,694	61,504,942	942,880	22,370,041	123,510,557

Eastern Network		
Tariff Group	Network Group	Tariff Description
Residential+Small Commercial		
V05	Valley	Low Usage - Controlled
V05U	Valley	Low Usage - Uncontrolled
V05S	Valley	Low Usage - TOU
V06	Valley	Residential - Standard Controlled
V06U	Valley	Residential - Standard Uncontrolled
V06S	Valley	Residential - Standard TOU
T05	Tauranga	Low Usage - Controlled
T05U	Tauranga	Low Usage - Uncontrolled
T05S	Tauranga	Low Usage - TOU
T06	Tauranga	Standard Residential & Commercial - Controlled
T06U	Tauranga	Standard Residential & Commercial - Uncontrolled
T06S	Tauranga	Standard Residential & Commercial - TOU
Unmetered Supply		
V01	Valley	Unmetered/Streetlighting
V02	Valley	Unmetered/Streetlighting
T01	Tauranga	Unmetered/Streetlighting
T02	Tauranga	Unmetered/Streetlighting
Medium Commercial		
V24	Valley	Commercial three phase 100A
V28	Valley	> 200 Amp up to 299 kVA
T22	Tauranga	Capacity 100 – 199kVA
T24	Tauranga	Capacity 200 -299kVA
T41	Tauranga	capacity 200 kVA unitised
Large Commercial / Industrial		
V40	Valley	Individual ICP prices
V60	Valley	Individual ICP prices
V601	Kinleith	Individual ICP prices
T50	Tauranga	Individual ICP prices
T601	Tauranga	Individual ICP prices
Eastern Region Total		

Transmission Revenue (FY21 Prices)					
Fixed (Monthly)	Fixed (Daily)	Variable	Demand	Non-standard	Total
-	-	392,381	-	-	392,381
-	-	-	-	-	-
-	-	4,343,631	-	-	4,343,631
-	-	1,548,605	-	-	1,548,605
-	-	-	-	-	-
-	-	9,530,467	-	-	9,530,467
-	-	-	-	-	-
-	-	1,028,035	-	-	1,028,035
-	-	-	-	-	-
-	-	3,219,619	-	-	3,219,619
-	-	5,377,054	-	-	5,377,054
-	-	-	-	-	-
-	-	8,273,390	-	-	8,273,390
-	-	-	-	-	-
-	-	12,986	-	-	12,986
-	242,687	-	-	-	242,687
-	-	-	-	-	-
-	-	72,406	-	-	72,406
-	278,431	-	-	-	278,431
-	-	-	-	-	-
-	-	1,455,025	-	-	1,455,025
-	-	179,109	-	-	179,109
-	-	-	-	-	-
-	-	1,162,477	-	-	1,162,477
-	-	136,536	-	-	136,536
-	-	370,596	-	-	370,596
-	-	-	-	-	-
-	-	-	-	1,233,283	1,233,283
-	-	-	-	1,362,259	1,362,259
-	-	-	-	3,290,260	3,290,260
-	-	-	-	-	-
-	-	-	-	3,476,646	3,476,646
-	-	-	-	4,019,885	4,019,885
-	-	-	-	-	-
-	521,118	37,102,316	-	13,382,333	51,005,767

Attachment B – Reliability limits and boundary values, caps, collars and targets

The reliability limits and boundary values for planned and unplanned SAIDI and SAIFI listed below are from Schedule 3.1 and 3.2 of the Determination. The target, collar and cap for unplanned SAIDI and SAIFI listed below are from Schedule 4 of the Determination.

Table B1: 2021 assessment period - Planned reliability limits

	Limit
Planned SAIDI	92.342
Planned SAIFI	0.393

Powerco is also subject to *cumulative* limits on planned SAIDI and SAIFI which apply in 2023 to the 5-year totals of the SAIDI/SAIFI limits. These are not applicable to the 2021 assessment period (or any assessment period other than 2023).

Table B2: 2021 assessment period - Unplanned reliability limits, boundary values, target, collar and cap

	Limit	Unplanned boundary value	Target	Collar	Cap
Unplanned SAIDI	183.514	11.710	162.533	141.522	183.514
Unplanned SAIFI	2.239	0.064	2.072	1.906	2.239

There have been no recalculations of the SAIDI and SAIFI limits, unplanned boundary values, targets, caps or collars in this assessment period.

Attachment C – Compliance statement references

The following tables reference the Determination requirements and provide guidance on the section of this Statement that meets the specified requirements.

Table D1: Wash-up amount calculation

Determination clause	Determination requirement	Compliance statement section
8.6	Powerco must calculate the wash-up amount for each assessment period using the methodology specified in Schedule 1.5 of the Determination	2

Table D2: Quality path summary

Determination clause	Determination requirement	Compliance statement section
9.1(a)	Comply with the annual planned interruptions reliability assessment where assessed values for SAIDI and SAIFI for the assessment period must not exceed the reliability limits for SAIDI and SAIFI	3.1
9.1(b)	Comply with the annual planned interruptions reliability assessment for each of the two immediately preceding assessment periods	
9.7(a)	Comply with the annual unplanned interruptions reliability assessment where assessed values for SAIDI and SAIFI for the assessment period must not exceed the reliability limits for SAIDI and SAIFI	3.2
9.7(b)	Comply with the annual unplanned interruptions reliability assessment for each of the two immediately preceding assessment periods	

Table D3: Annual compliance statement

Determination clause	Determination requirement	Compliance statement section
An annual Compliance Statement must be provided to the Commission consisting of:		
11.5(a)(i)	A statement regarding compliance with the requirement to calculate the washup amount for the assessment period	1
11.5(a)(ii)	A statement regarding compliance with the quality standards for the assessment period	1
11.5(b)	The day on which the statement was published	Cover
11.5(c)	A statement whether Powerco has entered into any agreement with another EDB or Transpower for an amalgamation, merger, major transaction or non-reopener transaction in the assessment period	1
11.5(d)	A certificate in the form set out in Schedule 7 signed by at least one Director of Powerco	5
11.5(e)	An assurance report meeting the requirements in Schedule 8, in respect of all information contained in the 'annual compliance statement'	6
11.6(a)	Details of the wash-up amount calculation, together with supporting information for all components of the calculation	2 and Attachment A
11.6(b)	Any reasons for non-compliance with the annual planned interruptions reliability assessment	N/a
11.6(d)	Any reasons for non-compliance with the annual unplanned interruptions reliability assessment	N/a
11.6(d)	Actions taken to mitigate any non-compliance and to prevent similar noncompliance in future assessment periods	N/a
11.6(e)	for the annual planned interruptions reliability assessment, the SAIDI assessed value, SAIFI assessed value, SAIDI limit and SAIFI limit for the assessment period, and any supporting calculations (including those in Schedule 3.1) and where applicable, the annual planned interruptions reliability assessments for the two previous assessment periods	3.1 and Attachment B
11.6(f)	For the annual unplanned interruptions reliability assessment, the SAIDI assessed value, SAIFI assessed value, SAIDI limit, SAIFI limit, SAIDI unplanned boundary value, SAIFI unplanned boundary value, SAIDI cap, SAIFI cap, SAIDI collar, SAIFI collar, SAIDI	3.2 and Attachment B

target and SAIFI target for the assessment period, and any supporting calculations (including those in Schedule 3.2) and where applicable, the annual unplanned interruptions reliability assessments for the two previous assessment periods

11.6(g) A description of the policies and procedures which Powerco has used for capturing and recording Class B interruptions and Class C interruptions, and for calculating SAIDI assessed values and SAIFI assessed values for the assessment period 3.4

11.6(h) The cause of each major event day within the assessment period NA
